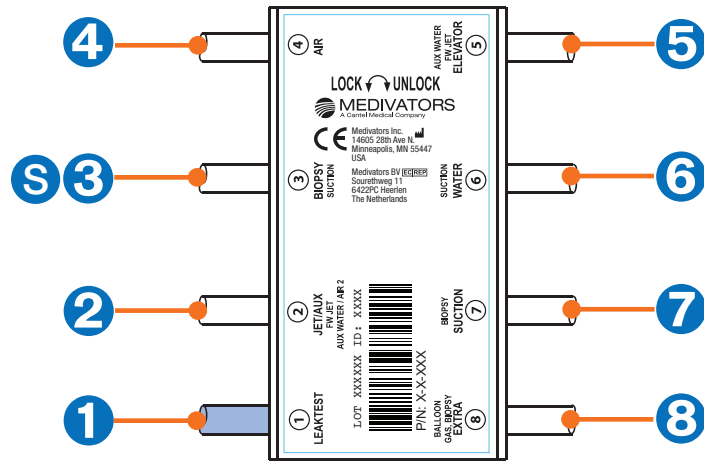


HOOKUP DIAGRAM



Each Hookup is comprised of multiple ports and connector assemblies. Each port is labeled with a Port ID number (circled). This same number also identifies the corresponding Connector Assembly. Each Connector Assembly is fitted with a specific endoscope connector.

CONNECTOR ASSEMBLY IDENTIFICATION CHART

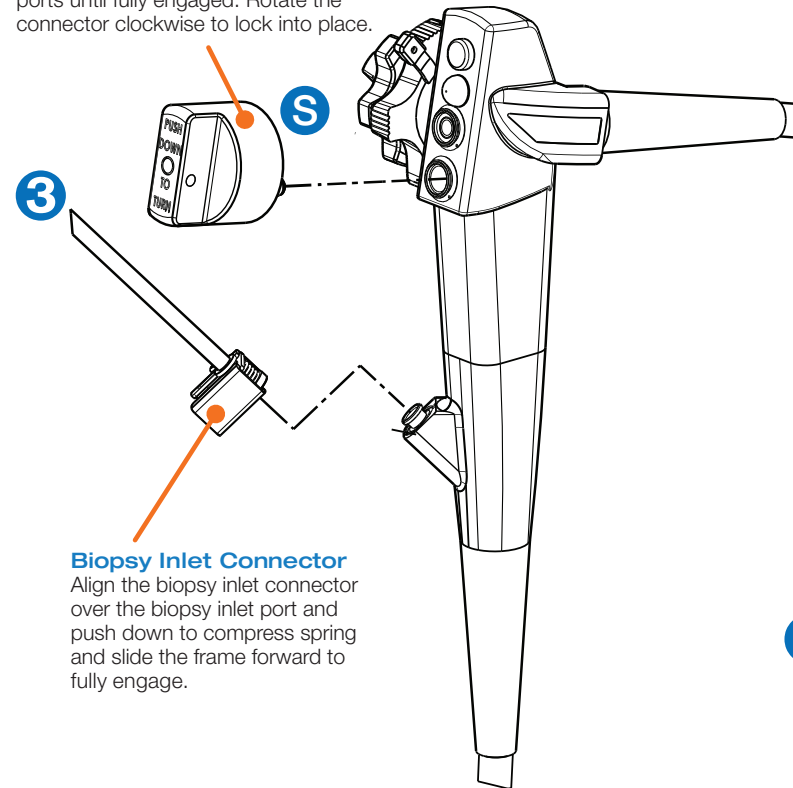
Port ID	Port Name	Connector Assembly Description	Order Number
1	LEAK TEST	Leak Test Connector Assembly	H28627-1
2	JET/AUX	Air/Water Connector Assembly	H28627-26
3	BIOPSY	Biopsy Inlet Connector Assembly	H28627-3
4	AIR	Air Probe Connector Assembly	H28627-4
5	ELEVATOR	Forward Water Jet Connector Assembly	H28627-5
6	WATER	Air/Water Connector Assembly	H28627-26
7	SUCTION	Suction Connector Assembly	H28627-7
8	EXTRA	N/A	N/A
S	N/A	Air/Water & Suction Port Separator	47049-915

If a Connector Assembly needs replacement, locate the port number/name and use the corresponding order number found in the chart above. Connector Assemblies are specific to individual hookups.



Air/Water & Suction Port Separator

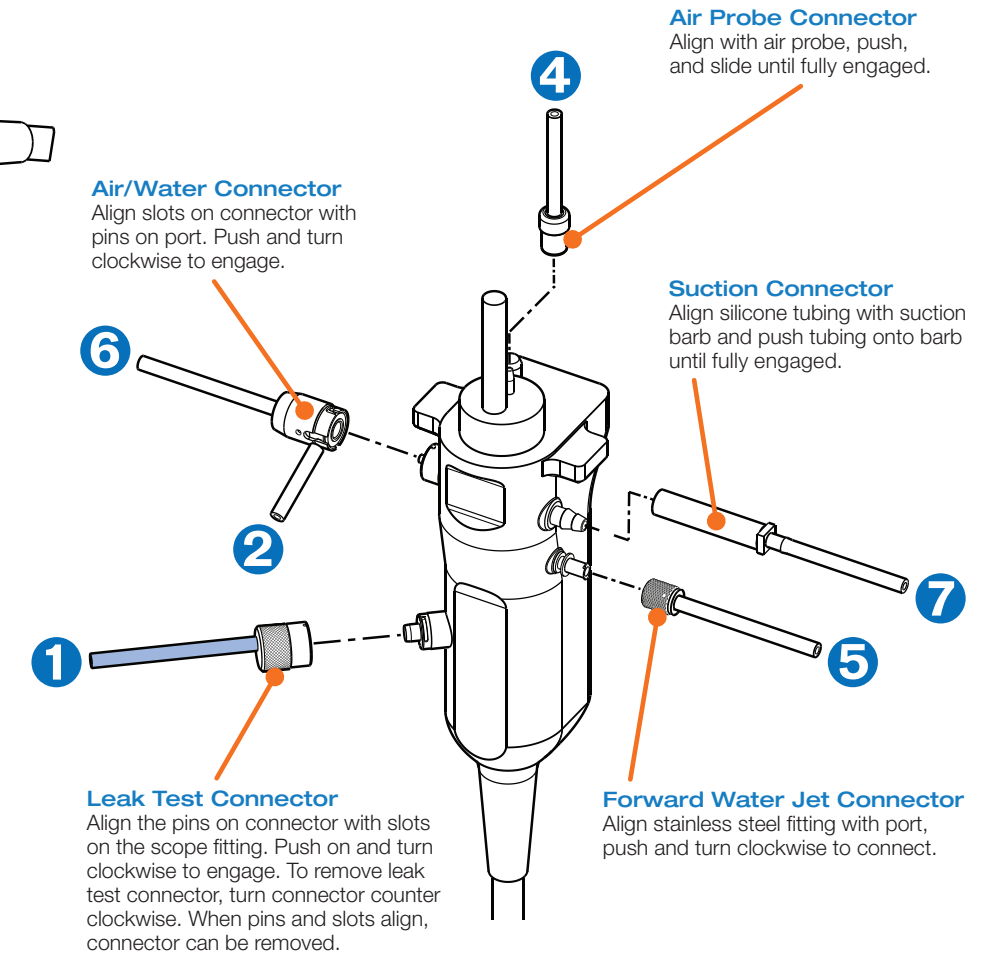
Align the separator with the piston ports. Ensure that the separator is in the unlocked position and put the connector onto piston ports until fully engaged. Rotate the connector clockwise to lock into place.



Biopsy Inlet Connector

Align the biopsy inlet connector over the biopsy inlet port and push down to compress spring and slide the frame forward to fully engage.

Locate the endoscope port and follow the instructions for attaching the corresponding Endoscope Connector. All connectors must be attached.



Air/Water Connector

Align slots on connector with pins on port. Push and turn clockwise to engage.

Air Probe Connector

Align with air probe, push, and slide until fully engaged.

Suction Connector

Align silicone tubing with suction barb and push tubing onto barb until fully engaged.

Leak Test Connector

Align the pins on connector with slots on the scope fitting. Push on and turn clockwise to engage. To remove leak test connector, turn connector counter clockwise. When pins and slots align, connector can be removed.

Forward Water Jet Connector

Align stainless steel fitting with port, push and turn clockwise to connect.

DESIGNATED HOOKUP FOR THE FOLLOWING FUJIFILM™ ENDOSCOPES*:

EG-760R	EG-760Z	EC-760R-V/M	EC-760R-V/I	EC-760ZP-V/M	EC-760ZP-V/L	EC-740T/M	EC-740T/L
---------	---------	-------------	-------------	--------------	--------------	-----------	-----------

* This list of corresponding endoscope models is subject to change without notice. For a full list, please go to:

www.medivators.com/hookuplookup

If you have any questions regarding this hookup, in the U.S., please contact Medivators Technical Support at 1-800-444-4729. Outside the U.S., please contact your Medivators representative.

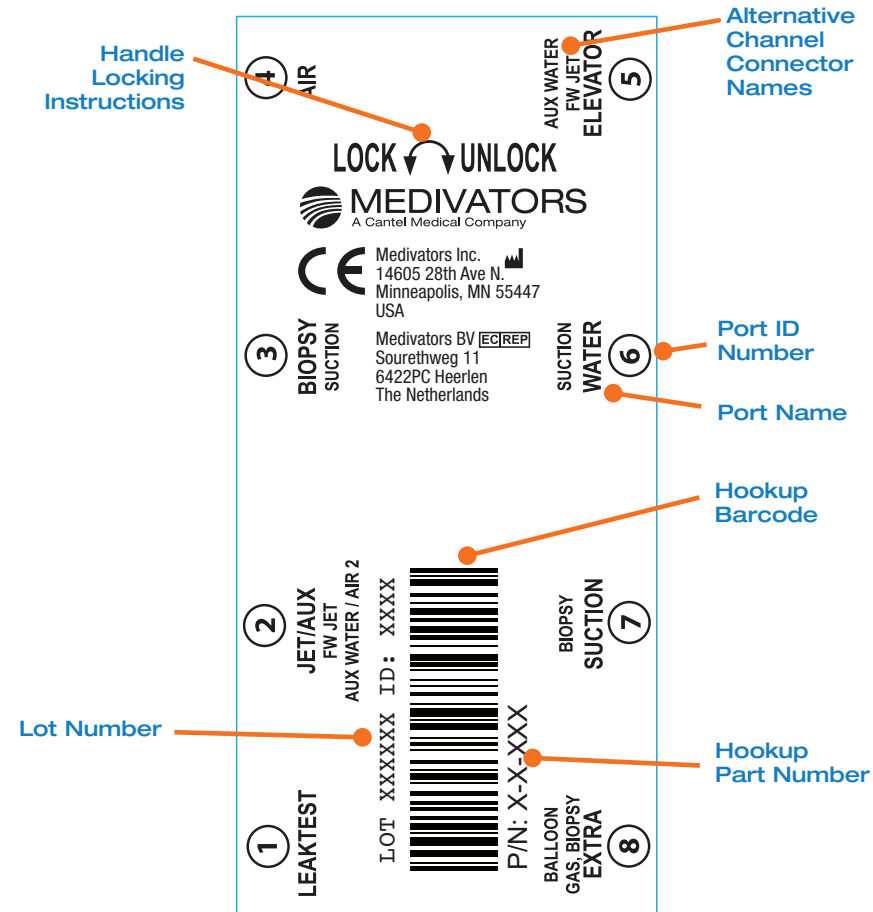
Representative endoscope for illustrative purposes only. For exact port locations, refer to endoscope manufacturer's instruction guide.



Ensure proper alignment of all connectors with the endoscope mating parts prior to attachment.

HOOKUP CONNECTOR BLOCK LABEL

The Hookup Connector Block Label contains useful information for quick reference.



Handle Locking Instructions - insert block onto basin channel manifold and move handle to the left to lock. Move to the right to unlock.

Lot Number - identifies date of manufacture.

Hookup Part Number - identifies hookup.

Hookup Barcode - barcode of part number.

Port Name - identifier of port location in ADVANTAGE system. Error logs identify issues using these names. Also identifier of Connector Assembly replacements for older model hookups.

Port ID Number - identifier for Connector Assembly replacements. Not found on older model hookups.

Alternative Channel Connector Names - connector names vary depending on specific endoscope channel configuration.

WARNINGS & CAUTIONS



This hookup is intended for connection only with the specific endoscope models identified in the appropriate MEDIVATORS online hookup guide. Use of this hookup with endoscopes other than those specified by the hookup application guide may result in inadequate HLD.

Users operating MEDIVATORS AERs and hookups must be trained and competent in the understanding of endoscope channel systems.

Prior to reprocessing, users must verify that the hookup used contains connections for all appropriate channels that require a separate reprocessing connection according to the hookup instructions.

All connectors and adapters must remain firmly attached and unrestricted for the entire disinfection cycle to ensure adequate HLD. Users must inspect the endoscope and hookup combination to verify proper connection and flow.

Modifications or repairs to hookups which do not correspond to the manufacturer's specifications may result in inadequate HLD and/or damage to endoscopes.

Failure to properly clean and prepare endoscope for immersion prior to hookup connection may result in inadequate HLD and/or damage to the endoscope.

Endoscopes must be inspected for damage and verified to be in proper working order prior to hookup connection. Connection of hookups to damaged endoscopes or endoscopes with obstructed/restricted channels could result in inadequate HLD.

Manual leak testing must be carried out in accordance with manufacturer's recommendations prior to reprocessing.

Install all necessary waterproof caps, plugs and cleaning adapters prior to immersion.

Do NOT autoclave MEDIVATORS hookups.

Medivators makes no claim on high-level disinfection efficacy when these reprocessing instructions are not followed, or when this hookup kit is applied to endoscopes other than those specified in the online interactive hookup guide.

Avoid biological contamination. Always wear personal protective equipment when handling endoscopes.

MEDIVATORS® is a registered trademark of Medivators Inc.
ISA® is a registered trademark of Cantel Medical (Italy) S.r.l.
All company or product names referenced are trademarks of their respective owners.



Medivators Inc.
14605 28th Avenue North
Minneapolis, MN
55447-4822 USA
Tel: +1.763.553.3300
Fax: +1.763.553.3387

Medivators BV
Sourethweg 11
6422 PC Heerlen
The Netherlands
Tel: +31.45.5.471.471
Fax: +31.45.5.429.595

Cantel (France) SAS
3 rue du pré fermé
31200 Toulouse
France
Tel: +33 (0) 5.61.245.275
Fax: +33 (0) 5.61.247.001

Cantel Medical (Italy) S.r.l.
Via Laurentina, 169
00071 Pomezia (RM) Italia
Tel.: +39 06 9145399
Fax: +39 06 9146099
www.cantelmedical.it

Cantel Medical (UK) Limited
Campfield Road
Shoeburyness, Essex SS3 9BX
United Kingdom
Tel: +44 (0) 1702.291878
Fax: +44 (0) 1702.290013

Cantel Medical Asia/Pacific Pte. Ltd.
1A International Business Park
#05-01 Singapore 609933
Tel: +65 6227.9698
Fax: +65.6225.6848

Cantel Medical Devices (China) Co. Ltd.
Unit 804-805, Innov Tower Block A,
Hongmei Road, Xuhui 200233 Shanghai
Tel: +86 21 60161380
Fax: +86 21 61210913